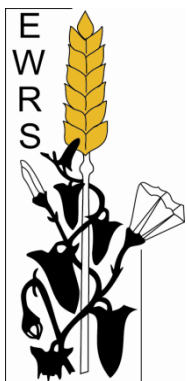


EUROPEAN WEED RESEARCH SOCIETYSecretary

Dr. Andrej SIMONČIČ
Agricultural Institute of Slovenia
Hacquetova 17
SI-1000 Ljubljana
andrej.simoncic@kis.si

Newsletter Editor

Dr. Camilla MOONEN
Land Lab/Agroecology
Institute of Life Sciences
Scuola Superiore Sant'Anna
Piazza Martiri della Libertà, 33
IT-56127 Pisa
newsletter@ewrs.org
moonen@sssup.it



Weeds as trap crop: Western corn rootworm, *Diabrotica virgifera virgifera* LeConte, is one of the most dangerous pest to maize. The beetle seeking for pollen in *Setaria* ears gets trapped by Hooked bristleglass / Bristly foxtail, *Setaria verticillata* (L.) P.Beauv (Pictures and text: Kurt Foltin; agrods.kf@gmx.at).

CONTENTS

Contents	2
From the Board.....	2
President's Message	2
Find an EWRS Member	3
Scientific Committee and Working Groups.....	4
Report of the EWRS Herbicide Tolerant Varieties Working Group Workshop	4
Member contributions.....	5
The histology of <i>Plantago</i>	5
Call for Conferences	7
NEOBIOTICA 2014 session on Alien Plants in Agricultural Areas.....	7
Workshop of the EWRS Working Group Germination & Early Growth.....	8
5 th Workshop of the EWRS Working Group Weeds and Biodiversity	8
68 th Annual Meeting of the Canadian Weed Science Society	9
ChemFree Working with Weeds Workshop	10
Workshop of the EWRS Working Group on Optimisation of Herbicide Dose.....	10
8 th International IPM Symposium.....	12
17 th European Weed Research Society Symposium	12
14 th International Symposium on Aquatic Plants	14
Upcoming Conferences and Workshops	14
Editorial.....	16
EWRS Board 2014–2015	16
EWRS Scientific Committee 2014-2015.....	17
Instructions for Contributors.....	18
Charges for Job Advertising in the Newsletter	18
National Representatives 2012-2015.....	19

FROM THE BOARD

PRESIDENT'S MESSAGE

Dear Members,



As you all know my dear friends, soon we will have the first consultation about the renewed version of the Constitution in Pisa. Unfortunately I am very disappointed seeing the manuscript, it is not what my previous messages suggested.

In my opinion the basic criteria is to divide the functions as much as possible, in hence the work of the officers will be more transparent and if they are representing their own interests and not the EWRS's they could be repealed. Even the President could be repealed. Therefore I suggest not all the positions should be filled via election process only if it's reasonable in case of positions like Working Group Leaders, National Representatives, President, Vice President and Post President. The Treasurer should be an employee with close supervision by the Audit Committee. The work of his should be audited by an international audit process where all the accounts should be acceptable and correct and it should serve the interests of the EWRS. This is still a black hole and for a year now I cannot see through the finances of the EWRS. It is very important that one person could have only one position, it is a Society not a network of corporations.

Another very important matter for me is to leave the Dutch legislation behind if this is causing this situation where only few people are able to understand the finances of the EWRS. For example local bank is no longer an option if they only communicate in Dutch. The same applies to the Chamber the Accountant and the Notary. On the other hand the opportunities for the Society in other countries should be analysed. For instance Germany could be very favourable for our Society and the things in the Constitution such as the auditor must be Dutch has to be cut out in order to keep the international profile and margin of the Society.

The Constitution must ensure the clean elections for the positions (listed above). It should not be possible to be elected with less than 10% of the votes. If we are talking about the elections the time limit to fill a position cannot be extend more than 8-10 years. This ensures that old habits, routines are not get stuck and no self-interest is represented.

Previously we discussed financial issues, and in addition to that I would like to see only one account under the name of EWRS. The current situation with the many accounts must be finished. The Society cannot have a Foundation as well or everything should be under the Foundation.

The Society must be stand on two legs, one is the Scientific Working Groups and the other is the network of the National Representatives. We have to find a way to include young people to our work, the Board should be co-opted with two members under 30 years of age instead of having a numerous members form the same counties. Obviously there could be many other feedback could be made about the new Constitution. I would like to ask everyone to write your feedbacks and suggestions to me and Andrej Simoncic.

Prof. Dr. habil László Radics
E-mail: laszlo.radics@mogert.hu

FIND AN EWRS MEMBER

Recently a new service has been activated by the Membership Officer Ben Post. Any EWRS member can now find address details of other EWRS members. Please follow these steps:

1. Log in to the Official Membership Office website <http://ewrs.bureaupost.eu/>
2. Chose from the main menu 'Find Members'
(http://ewrs.bureaupost.eu/en/main/Find_Members)
3. Select a search criteria.

SCIENTIFIC COMMITTEE AND WORKING GROUPS

REPORT OF THE EWRS HERBICIDE TOLERANT VARIETIES WORKING GROUP WORKSHOP

The EWRS Herbicide Tolerant (HT) Varieties Working Group (WG) held a one day workshop in the Lindner Congress Hotel, Höchst – Frankfurt (Germany) on 21 May 2014 to discuss diverse scientific aspects of the technologies and to understand better benefits and concerns related to some specific selected European case studies. This workshop was the third of its kind (after Bingen, Germany (2012) and Samsun Turkey (2013)) since the establishment of the HT Varieties Working Group in November 2012.

The workshop was well attended with 65 delegates from across Europe, North America and Australia, representing researchers, advisers, regulators and industry. Workshop sessions were ended by constructive animated debates.

The workshop sessions were covering the following topics:

Environmental impacts to be considered with introduction of HT varieties and covered views related to changes in agricultural practices, economical impacts and biodiversity.

New developments were reflecting on future introduction of HT sugar beet and ongoing introduction of HT ryegrass in Europe . The latter created animated discussions on the introduction of such a HT crop in view of management problems encountered to cope with natural resistance development (see also workshop of the Herbicide Resistance WG, Frankfurt-Germany 2014). The consensus after the discussions was that the HT Varieties WG in joint effort with the Herbicide Resistance WG should reach out to highlight concerns to regulators on this particular topic.

Additional sessions were devoted to **HT wheat, HT oilseed rape and HT sunflower**. Researchers presented biological and biochemical aspects, weed control benefits and potential impact on weed resistance development.

The balance of risks (and benefits) associated with introduction of HT varieties suggests they can be useful additional or alternative agricultural tools, but require a well defined and communicated **monitoring plan and product stewardship**. Different venues to reach out to farmers were discussed. The consensus was that the HT Varieties WG has to play a more active role in this communication.

All workshop presentations are loaded onto the HT Varieties WG pages on the EWRS web site http://www.ewrs.org/Herbicide_tolerant_varieties.asp

Thanks also to Bayer Crop Science for providing assistance in the local organization. Thanks to the Organizing Committee of the Herbicide Resistance workshop who facilitated a lot of the logistics in organizing back to back workshops in Frankfurt.

The Organising Committee

Ivo Brants, Jan Petersen, Paul Neve, Per Kudsk and Matthias Pfenning.

MEMBER CONTRIBUTIONS

THE HISTOLOGY OF *PLANTAGO*.

Dear colleagues,

The object of this contribution is the genus *Plantago*. I will refer here to two perennial species only, to *Plantago major* L. (Bayer code: PLAMA) and *Plantago lanceolata* L. (Bayer code: PLALA). Their English common names are broad leaf or greater plantain and buckhorn, narrow-leaved or ribwort plantain. Plantains often occur on roadsides, lawns, in orchards, pastures and meadows or on disturbed habitats. Phytosociologists have named different plant communities after *Plantago* species. *P. major* is typical of trampled habitats and compacted soils (Figure 2). *P. lanceolata* often occurs in pastures and meadows. Glyphosate resistant biotypes of narrow-leaved plantain were discovered in the year 2003 already in South African orchards and vineyards.



Figure 3 : *Plantago lanceolata* in a meadow near Frankfurt

Both species form a basal rosette. The stem or scape ends with a terminal spike. The two species can easily be distinguished by their leaf form, the relative length of their scape and by their flowers. According to its Latin name, *P. lanceolata* has a lanceolate leaf (Figure 4), whereas that of *P. major* is broadly elliptic or ovate (Figure 1). The stalk, scape or stem of *P. lanceolata* is much longer than the spike. In *P. major*, the spike is as long as the stalk or longer.



Figure 1 : Two year old *P. major* with fibrous roots



Figure 2 : *Plantago major* on a farm track near Frankfurt



Figure 4 : Lanceolate leaf of *P. lanceolata*



Figure 5: Spike of *P. major*



Figure 6: Spike of *P. lanceolata*

The stem anatomy of the two species is quite different. Stems of *P. major* are round (Figure 7) whereas those of *P. lanceolata* have ribs (Figures 6 and 9). The vascular bundles of *P. major* are bicollateral with phloem on the inner and outer side of the xylem part. In older stems, phloem is enclosed by fibers and forms isles (Figure 8). The vascular bundles of *P. lanceolata* are collateral, this means phloem on the outside and xylem on the inside. Typical of both species is, however, a wide ring of fibers surrounding the vascular bundles. Also characteristic is a large celled endodermoid layer or starch sheath (Figures 8 and 10).

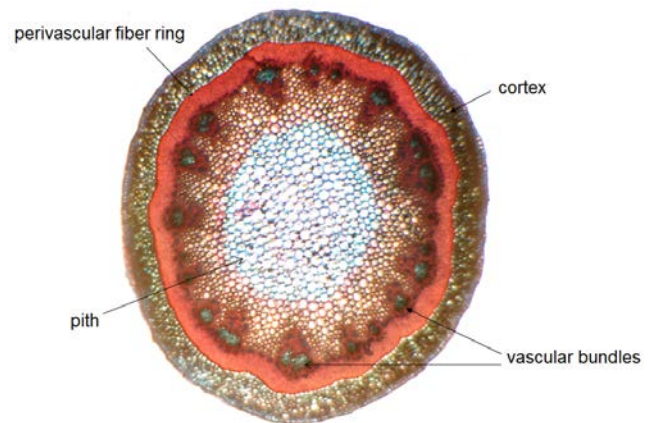


Figure 7: Transverse section through stem of *P. major*; Etzold Blue, 40x

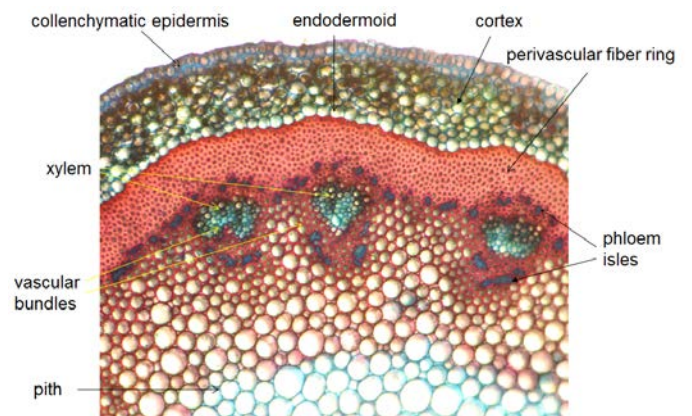


Figure 8: Transverse section through stem of *P. major*; Etzold Blue, 100x

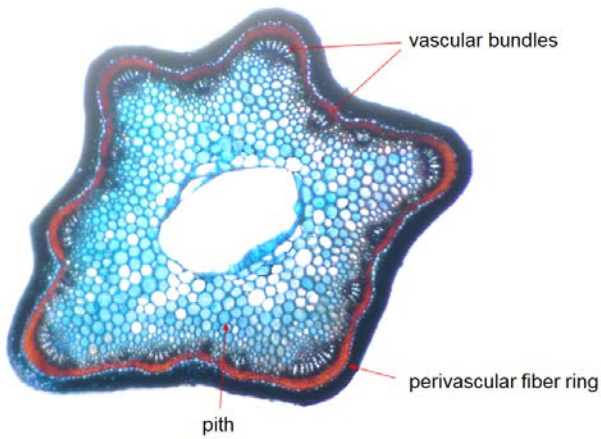


Figure 9 : Transverse section through *P. lanceolata* stem; Etzold Blue, ~20x

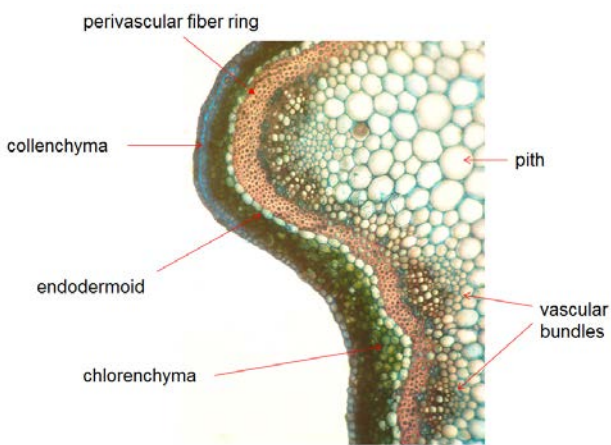


Figure 10: Transverse section through *P. lanceolata* stem; Etzold Blue, ~100x

Both species develop a branched root in the first year which is replaced by fibrous roots arising from a short rhizome in the second year. Figure 11 shows the centre of a fibrous root tip with a tetrarch xylem arrangement.

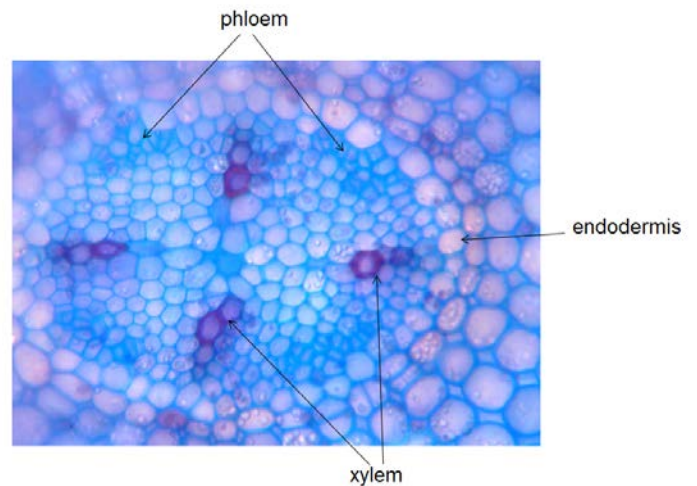


Figure 11: Transverse section through tip of fibrous, tetrarch *P. media* root

H. Krähmer

[Back to Content](#)

CALL FOR CONFERENCES

NEOBIOTICA 2014 SESSION ON ALIEN PLANTS IN AGRICULTURAL AREAS

3–8 November 2014
Antalya, Turkey.

Dear Colleagues,

I am happy to announce that NEOBIOTA 2014 agreed to add an EWRS-NEOBIOTA common session on "Alien plants in agricultural areas".

Weed scientists and conservation biologists can work together towards solving weed problems caused by alien plants! Go to <http://neobiota2014.org/> for more details.

You are invited to share your experiences. The abstract submission has been extended to 11th July 2014.

Many thanks for your contribution.
Christian Bohren

WORKSHOP OF THE EWRS WORKING GROUP GERMINATION & EARLY GROWTH

9-11 November 2014
Uppsala, Sweden

The EWRS Working Group Germination & Early Growth is organising an informal workshop 9-11 November at Swedish Agricultural University (SLU), Uppsala, Sweden, starting with a welcome dinner Sunday evening. The workshop will start on Monday morning and will close early Tuesday afternoon to allow participants to return to their home on Tuesday.

The aim of the meeting is:

- to discuss further publications from our common experiments with *Chenopodium album* in 2006-2007 and 2007-2009;
- to plan future WG activities for 2015-2016: new joint experiments, modelling, publications, meetings;
- to be introduced to the work of other working group members (posters).

For attendees from outside Uppsala accommodation has been reserved at the hotel Sunnersta Herrgård, near SLU Campus (<http://www.sunnerstaherrgard.se/index.php?id=669>). Dinner on arrival on the evening of 9th and on the evening of the 10th and all meals + coffee during the meeting + accommodation for two nights are estimated to be SEK 2800 per person (corresponds to approximately € 320 per person). To encourage young scientists to attend the meeting, subsidies for young scientists are made available through the EWRS and can be inquired for by sending an e-mail to kirsten.torresen@bioforsk.no.

Members of the working group will be informed via e-mail. Additional information can be found on the website of EWRS: <http://www.ewrs.org/>. If you have any questions regarding the workshop please email Kirsten Tørresen (address above) and Lars Andersson (lars.andersson@slu.se). Deadline for final registration is 31st August 2014.

Organizers: Kirsten Tørresen and Lars Andersson

5TH WORKSHOP OF THE EWRS WORKING GROUP WEEDS AND BIODIVERSITY

17-19 November 2014
Pisa, Italy

We are pleased to announce the 5th Workshop of the EWRS working group Weeds and Biodiversity. A two-day workshop is planned for 17-19 November 2014 in Pisa, Italy. Please keep that week free in your agenda.

Members of the working group will be informed via e-mail circulars and non-members will find additional information via the website of the working group: (http://www.ewrs.org/weeds_and_biodiversity.asp).

Local organisers; Paolo Barberi, Camilla Moonen, Federica Bigongiali, Gionata Bocci, Stefano Carlesi.

68TH ANNUAL MEETING OF THE CANADIAN WEED SCIENCE SOCIETY

17 - 20 November, 2014

Fairmont The Queen Elizabeth, Montreal (Québec), Canada

The organizing committee for the annual meeting of CWSS/SCM is pleased to welcome you to the fabulous Fairmont The Queen Elizabeth in downtown Montréal, Québec on November 17 to 20, 2014.



This internationally renowned hotel is located above the train station and connected to the extensive underground city of thousands of boutiques, restaurants and cafés, and within walking distance of sports and cultural attractions. This Montréal hotel reflects the city's distinct elegance and charm. Both the Bell Centre, home to the Montreal Canadiens hockey team and McGill University are just footsteps away. We have developed an agenda which we hope will be interesting and stimulating for all of you.

Here is a sneak preview of our proposed agenda.

Symposium : Audit on integrated weed management

- Professional Development workshops
- Graduate Student Presentations
- Programme Sessions on Advances in Weed Science
- Cereals, oilseeds and pulses
- Horticulture and special crops
- Soybean, corn, and edible beans
- Forage, rangeland, forestry and industrial vegetation
- Weed biology & ecology
- Invasive & noxious weeds
- PMRA, CFIA regulatory issues and provincial weed reports

For more information visit: <http://www.weedscience.ca>

Symposium : Audit on integrated weed management

An audit is defined as a systematic examination to determine whether activities and related results comply with the planned arrangements and whether these arrangements are implemented effectively and are suitable to achieve objectives. "Did our research and transfer activities to producers have allowed us to reach the expected objectives of integrated weed management over the years?" Our invited speakers will evaluate the real impact of integrated weed management for some of our production systems.

- Integrated indicator for crop management
- New technologies and IWM Tools
- Bioherbicides and IWM
- Organic agriculture and IWM
- Evaluation of real and perceived agronomic risks – social aspect
- Evaluation of real and perceived agronomic risks – economic aspects
- Next challenges

Room rates negotiated for the participants to the conference are also available 3 days before and after the conference. Excellent room rates were negotiated at \$169/night.

Take advantage of this opportunity and take a little vacation.

CHEMFREE WORKING WITH WEEDS WORKSHOP

28 November 2014
Melbourne, Australia

The team of David Low that prepares *The Weed's News* will be convening the ChemFree Working with Weeds Workshop to be held in Melbourne on the 28th of November, 2014. They have a great line-up of speakers and there will be opportunities to learn from other participants in the planned roundtable sessions and site-visit to the Merri Creek. **Registrations close 14 November, 2014.** Please [click here](#) to view the workshop program and to register on-line.

Please also note that on the 29th of November (the day after our ChemFree Workshop) there will be a free Weed's Network Field Day at Musk near Daylesford, Central Victoria. Please [click here](#) to see the program and to register for the free field day.

To become a member of The Weed's Network and read The Weed's News, please [click here to join](#).

WORKSHOP OF THE EWRS WORKING GROUP ON OPTIMISATION OF HERBICIDE DOSE

5-6 March 2015
Heraklion, Crete, Greece

The Working Group on Optimization of Herbicide Dose is pleased to announce that we will be organizing a workshop in Heraklion on the island of Crete (Greece) on 5-6 March 2015 with an optional field trip on Saturday 7 March. The theme of the workshop is: *Optimizing herbicide use in an Integrated Weed Management (IWM) context*.

The workshop will be organized in conjunction with the Greek Weed Science Society (GWSS) after the closing day of the 18th Greek Weed Science Congress (to be held on 3-4 March 2015). The venue of the workshop is the Conference Centre "Kastellaki" owned by the Heraklion Chambers of Commerce and Industry (<http://www.ebeh.gr/web/guest/home>). The conference centre is located in city centre.

Why a workshop on optimizing herbicide use in an IWM context?

Weed management in Europe is expected to undergo major changes in the future. In recent years the number of available herbicides has been steadily decreasing and the trend is expected to continue in the coming years following the launch of Regulation 1107/2009 due to its new and stricter criteria for registration of pesticides. It is also expected that the implementation of the Water Framework Directive will focus on herbicides as a key target priority chemical compounds. Concomitantly herbicide resistance is becoming more and more widespread and in particular non-target site resistance in several grass weed species is causing growing concern due the wide range of modes of action that these weed biotypes are exhibiting resistance to.

Overcoming these challenges will require fundamental changes to weed management practices reducing the reliance on herbicides and increasing the adopting of non-chemical methods and cultural control practices. In this perspective, Directive 2009/128/EC with its demand for farmers to adopt IPM (for weeds IWM) to minimize the adverse effects of pesticides on human health and the environment, is very timely.

Despite a reduced availability of herbicides and increased problems with herbicide resistant weed biotypes, use of herbicides will, at least in the major crops, continue to be the mainstay of IWM strategies in the foreseeable future. An important research question to address is therefore how to optimize herbicide use in the context of IWM. For minor crops, where less herbicides are available than for major crops, more extensive changes to weed management strategies may be required.

Tentative programme

This workshop will specifically address the role and use of herbicides in an IWM context in both major and minor crops. Focus will not only be on the agronomic performance of IWM but also on environmental aspects such as drift including effects on non-target organisms and protection of surface and groundwater from herbicides. The workshop will accept submissions on all aspects of optimizing herbicide use in an IWM context but particularly encourage submissions on the following sub-topics:

- IWM and herbicide development
- Combining non-chemical and chemical control methods
- IWM and herbicide resistance
- IWM in minor crops
- IWM and herbicide application

Each session (sub-topic) will be opened with an introductory lecture given by an invited speaker.

Subsidies for young scientists

To encourage young scientists to attend the meeting, subsidies for young scientists are made available through the EWRS and can be applied for by sending an e-mail to per.kudsk@agrsci.dk. Young scientists (i.e. Master-students, PhD-students, young scientist below 35 years) that are EWRS members and are giving a presentation (oral or poster) at the workshop can receive a refund to cover part of their accommodation and travel expenses. If the student is not an EWRS-member, an amount equal to the yearly EWRS fee will be deducted from the subsidy, and the student will be enrolled in EWRS.

Further information

More information on registration and accommodation close to the venue will be available soon on the EWRS website.

For further information you are also welcome to contact Per Kudsk (Chair of the Working Group on Optimization of Herbicide Dose; per.kudsk@agro.au.dk) or Demos Chachalis (local organizer; President of the GWSS, d.chachalis@bpi.gr)

Local Organizing Committee

Dr. Demos Chachalis (d.chachalis@bpi.gr)

Dr. Thomas Gitsopoulos (gitsopoulos@yahoo.gr)

Mr. Giorgos Georgoulakis (georgoulakis1965@yahoo.gr)

Scientific Organizing Committee

Prof. Per Kudsk (per.kudsk@agrsci.dk)

Dr. Demos Chachalis (d.chachalis@bpi.gr)

Dr. Ilias Travlos (travlos@aua.gr)

Prof. Raphael de Prado (qe1pramr@uco.es)

Prof. Josef Soukup (soukup@af.czu.cz)

Registration fee

The registration fees will be 80 EUR for EWRS members and 120 EUR for non-EWRS members. Students will have a reduced fee of 40 EUR.

Accommodation

Costs of accommodation are from 40 EUR per night (3-star hotels at the city center).

Submission procedure

More information on registration, submission of abstracts, and accommodation close to the venue will be available very soon on the EWRS website.

[Back to Content](#)

8TH INTERNATIONAL IPM SYMPOSIUM

23 -26 March 2015
Salt Lake City, USA

"IPM—Solutions for a Changing World" is the theme of the 8th International IPM Symposium to be held March 23–26, 2015 in Salt Lake City Utah USA at the Salt Palace Convention Center.

Sessions will be organized by these tracks, although others will be considered.

- Fruit & Nut Crops
- Rangeland/Livestock/Pastures/Turf and Sod/Natural Landscapes/Forestry
- Row/Agronomic Crops/Field Crops
- Specialty Crops: Nursery, Greenhouse, Hydroponic, Ornamental
- Urban/Structural/Landscape/School/Public Health
- Vegetable Crops

Priority will be given to submissions that address these aspects of IPM within the six tracks, although others will be considered.

- Breakthroughs in new pesticides, biocontrol agents and biopesticides
- Decision-making technology
- Funding and policy issues
- IPM from a global perspective
- IPM challenges and successes
- IPM partnerships
- Leading through education and outreach
- New tools for the IPM toolbox
- Organic and sustainable pest management
- Invasive and new problem species (plants, insects, diseases, etc.)
- Regulatory updates
- Techniques to increase IPM adoption

Sessions will be organized in 1-hour time blocks. We are planning two types of session formats for the program.

- Mini-symposia should have a broad interest with estimated audiences of 75-100 people.
- Roundtable discussions/workshops will likely be topic specific, maybe involving hands-on activities, attracting 20-30 attendees.

Information

Contact Elaine Wolff (wolff1@illinois.edu) to learn more about attending, exhibiting at or contributing to the Symposium. For information please see: <http://ipmcenters.org/ipmsymposium15>.

17TH EUROPEAN WEED RESEARCH SOCIETY SYMPOSIUM

23-26 June 2015
Montpellier SupAgro, France
Weed management in changing environments

The European Weed Research Society (EWRS) and the French Association for Plant Protection (AFPP), together with the National Institute for Agronomy Research (INRA) and Montpellier SupAgro, are pleased to invite you to the 17th European Weed Research Society Symposium which will be held at Montpellier SupAgro, France. All holding institutions will make every effort to provide an excellent environment for a stimulating and enjoyable scientific symposium. The program will provide valuable information and networking opportunities for participants to discuss on any research, education and applied aspects related to weeds and weed management.

Scientific program

The EWRS Symposium aims at bringing people together to report on and examine all topics otherwise separately moderated by EWRS Working Groups (see <http://www.ewrs.org>). It will give emphasis on "Weed management in changing environments".

Weeds have a significant impact on the quantity and quality of agricultural products and on the ecosystems. The environments in which weeds thrive are constantly changing and weed management is challenged by regulatory, economic and environmental pressures. Weed populations are dynamic, rapidly adapting to these changing environments and weed management approaches. Weed research must adapt to new challenges, adopting state of the art technologies to deliver sustainable weed management solutions that limit weed adaptation and provide ecosystem services in agricultural systems.

We particularly welcome contributions that address these grand challenges in weed research. Furthermore the symposium will address current issues and novel approaches in weed biology, weed ecology, spatial aspects of weeds, crop/weed interactions, weed management approaches), chemical weed management and related disciplines.

The program includes four days of sessions, with keynote papers, ordinary oral and poster presentations, platforms for discussion forums, and field trip. All participants are invited to submit abstracts for oral and poster presentations. Instructions for the preparation and submission of abstracts will be given on the website: <http://www.ewrs2015.org> (see deadlines below). Side events, e.g. EWRS Working Group meetings and training sessions, will also be scheduled (tentatively on June 22).

Venue



The symposium will take place at the campus of Montpellier SupAgro (International Centre for Higher Education in Agricultural Sciences) which is well situated in a beautiful park in the city center of Montpellier.

The urban agglomeration is nearly 0.4 million inhabitants. Montpellier is bordering the Mediterranean Sea in the Languedoc-Roussillon province in South

France. It is 3h from Spain and Italy and 1h30 from Marseille by car, 3h15 from Paris by TGV train, and direct links to Montpellier airport are operated from Paris, Brussels, Frankfurt, Copenhagen, London, Birmingham, Munich and Roma. The city and the region are of high touristic and culinary interest. The participants will arrange accommodation on their own as many hotels and resort places are proposed in the city, but we will do our best to propose a selection of hotels and book rooms at the student residence on the campus.

Registration

Symposium registration fees will be announced in September 2014. Reduced rate will be available for students. Registration fees will cover book of abstracts, morning and evening shuttle bus, field trip, lunches, morning and afternoon refreshments, and a symposium banquet.

Subsidies for junior scientists

EWRS will supply subsidies to cover part of the expenses of junior scientists submitting an oral or poster paper. Details on when and how to apply for these subsidies will be disseminated through the symposium and EWRS websites and the EWRS Newsletter.

Important dates and deadlines

- 31 October 2014 Deadline for abstracts submission
- 15 October 2014 Call for junior scientists subsidy application published
- 15 January 2015 Distribution of acceptance letters on authors / abstract revisions
- 28 February 2015 Deadline for submission of revised final abstracts;
- 28 February 2015 release of 2nd circular with program
- 15 March 2015 Communication of junior scientists awarded a subsidy
- 30 April 2015 Deadline for early bird registration
- 31 May 2015 Publication of detailed program

Address all correspondence to:
Henri DARMENCY,
INRA, UMR1347 Agroécologie
17 rue Sully, Bat. Coste, BP 86510,
21065 Dijon,
France
Tel: 33 (0)380 693186
Fax: 33 (0)380 693 262
e-mail : ewrs2015@dijon.inra.fr



14TH INTERNATIONAL SYMPOSIUM ON AQUATIC PLANTS

14-18 September 2015
Edinburgh, Scotland

The 14th International Symposium on Aquatic Plants will be held in the beautiful Playfair Library, Edinburgh, the historical capital of Scotland, between the 14-18 September 2015. The aim of the conference is to promote debate in all issues relating to science and management of aquatic and riparian vegetation. Ten special sessions are being organized, including a session on Vegetation and Dams.

For more information, please visit the website at <https://sites.google.com/site/aquaticplants2015/>.

UPCOMING CONFERENCES AND WORKSHOPS

8TH NEOBIOTA MEETING

3-8 November 2014

Antalya, Turkey

<http://www.neobiota2014.org/>

WORKSHOP OF THE EWRS WORKING GROUP GERMINATION & EARLY GROWTH

9-11 November 2014

Uppsala, Sweden

kirsten.torresen@bioforsk.no

5TH WORKSHOP OF EWRS WG WEEDS AND BIODIVERSITY

17-19 November 2014

Pisa, Italy

http://www.ewrs.org/weeds_and_biodiversity.asp

68TH ANNUAL MEETING OF THE CANADIAN WEED SCIENCE SOCIETY

17-20 November 2014

Montreal, Québec, Canada

<http://www.weedscience.ca>

CHEMFREE WORKING WITH WEEDS WORKSHOP

28 November 2014

Melbourne, Australia

<http://www.eventbee.com/v/chemfree2014>

CHALLENGES FOR CROP PRODUCTION AND QUALITY - ANNALS OF APPLIED BIOLOGY CENTENARY CONFERENCE

9 – 10 December 2014

The Olde Barn Hotel, Marston, Lincs, UK

<http://www.aab.org.uk/contentok.php?id=168&basket=wwwshowconfdets>

WORKSHOP OF EWRS WORKING GROUP OPTIMISATION OF HERBICIDE DOSE

5-6 March 2015

Heraklion, Crete, Greece

http://www.ewrs.org/optimisation_of_herbicide_dose.asp

8TH INTERNATIONAL IPM SYMPOSIUM "IPM—SOLUTIONS FOR A CHANGING WORLD"

23 – 26 March 2015

Salt Lake City, Utah, USA

<http://ipmcenters.org/ipmsymposium15>

17TH EWRS SYMPOSIUM

23 – 26 June 2015

Montpellier, France

<http://www.ewrs2015.org>

18TH INTERNATIONAL PLANT PROTECTION CONGRESS "MISSION POSSIBLE: FOOD FOR ALL THROUGH ADEQUATE PLANT PROTECTION"

24 – 27 August 2015

Berlin, Germany

<http://www.ippc2015.de/>

14TH INTERNATIONAL SYMPOSIUM ON AQUATIC PLANTS

14-18 September 2015

Edinburgh, Scotland.

<https://sites.google.com/site/aquaticplants2015/>

RESISTANCE '15 – A 7TH INTERNATIONAL MEETING ON PESTICIDE RESISTANCE

14 – 16 September 2015

Rothamsted Research, Harpenden, UK

<http://www.rothamsted.ac.uk/Resistance2015>

14TH INTERNATIONAL SYMPOSIUM ON AQUATIC PLANTS

14-18 September 2015

Edinburgh, Scotland

<https://sites.google.com/site/aquaticplants2015/>

BCPC CONGRESS 2015

6 - 7 October 2015

Hilton Metropole, Brighton, UK

<http://www.bcpcongress.org/>

7TH INTERNATIONAL WEED SCIENCE CONGRESS

19 – 25 June 2016

Prague, Czech Republic

<http://www.iwsc2016.org/>

[Back to Content](#)

EDITORIAL

EWRS BOARD 2014–2015

Executive Committee

President 2014-2015	Prof. Dr. habil László RADICS Corvinus University of Budapest Dept. Ecological and Sustainable Production Systems Lidérc u, 31 H-1121 BUDAPEST	T + 36 302801020 Web: www.mogert.hu Skype Iradics2 laszlo.radics@uni-corvinus.hu
Vice President 2014-2015	Prof. Dr. Bärbel GEROWITT Insitute for Land Use University of Rostock Satower Str, 48 DE-18051 ROSTOCK	T + 49 381 498 2200 F + 49 381 498 2199 baerbel.gerowitt@uni-rostock.de
Secretary 2012-2015	Dr. Andrej SIMONČIČ Agricultural Institute of Slovenia Hacquetova 17 SI-1000 LJUBLJANA	T +386 1 280 52 20 F +386 1 280 52 22 andrej.simoncic@kis.si www.kis.si
Treasurer / Membership Officer 2012-2015	Drs. Ben POST EWRS Membership Office Postbus 28 NL-6865 ZG DOORWERTH	F + 31 26 3706896 ewrs@bureaupost.nl
Scientific Secretary 2014-2017	Prof. Josef SOUKUP Faculty of Agrobiology, Food and Natural Resources Czech University of Life Sciences Prague Kamycka 129 CZ-165 21 PRAGUE 6 - SUCHDOL	T + 420 224 382780 F + 420 224 382780 M + 420 777 206 072 soukup@af.czu.cz

Additional Members

2012-2015	Dr. Maja MESELDZIJA Dept. for Environmental and Plant Protection University of Novi Sad Trg Dositeja Obradovica 8 RS-21000 NOVI SAD	T + 381 21 450 616 maja@polj.uns.ac.rs Skype maja.meseldzija
2012-2015	Prof. Dr. Jordi RECASENS Weed Science and Agricultural Botany Universitat de Lleida Avda Rovira Roure 191 ES-25198 LLEIDA	T + 34 973 702 549 jrecasens@hbj.udl.cat
2014-2017	Prof. Dr. Hüsrev MENNAN Ondokuz Mayıs University Plant Protection Mayis Universitesi TR-55139 SAMSUN	T + 90 362 3121919 hmennan@omu.edu.tr
2014-2017	Dr. Francesco VIDOTTO Agroselviter Via Leonardo Da Vinci 44 IT-10095 GRUGLIASCO (TO)	T + 39 011 6708781 francesco.vidotto@unito.it Skype francesco.vidotto
WEED RESEARCH Chairman Editorial Board	Dr. Paul HATCHER School of Biological Sciences, Plant Science Laboratories University of Reading GB -READING RG6 6AS	T + 44 118 378 8091 F + 44 118 378 7464 p.e.hatcher@rdg.ac.uk
Past-President 2014-2015	Prof. Dr. Paolo BÀRBERI Land Lab/Agroecology; Institute of Life Sciences Scuola Superiore Sant' Anna Piazza Martiri della Libertà 33 I-56127 PISA	T + 39 050 883 525 F + 39 050 883 225 barberi@sssup.it

[Back to Content](#)

EWRS SCIENTIFIC COMMITTEE 2014-2015

Chairman / EWRS Vice-President
2014-2015

Prof. Dr. Bärbel **GEROWITT**
Insitute for Land Use
University of Rostock
Satower Str. 48
DE-18051 ROSTOCK

T T + 49 381 498 2200
F + 49 381 498 2199
baerbel.gerowitt@uni-rostock.de

Scientific Secretary
2014-2017

Prof. Josef **SOUKUP**
Faculty of Agrobiolgy, Food and Natural Resources
Czech University of Life Sciences Prague
Kamycka 129
CZ-165 21 PRAGUE 6 – SUCHDOL

T + 420 224 382780
F + 420 224 382780
M + 420 777 206 072
soukup@af.czu.cz

EWRS President
2014-2015

Prof. Dr. habil László **RADICS**
Corvinus University of Budapest
Dept. Ecological and Sustainable Production Systems
Villányi út 29-43, Building "C"
H-1121 BUDAPEST Lidérc u, 31

T + 36 302801020
Web: www.mogert.hu
Skype Iradics2
laszlo.radics@uni-corvinus.hu

EWRS Working Groups

Biological Control of Weeds

Dr. Paul **HATCHER**
School of Biological Sciences, Plant Science Laboratories
The University of Reading,
GB-READING RG6 6AS

T + 44 118 378 8091
F + 44 118 378 7464
p.e.hatcher@rdg.ac.uk

Crop / Weed Interactions

Dr. Lammert **BASTIAANS**
Dept, Crop and Weed Ecology
Wageningen University,
Postbus 430
NL-6700 AK WAGENINGEN

T + 31 317 48 4770
F + 31 317 48 5572
lammert.bastiaans@wur.nl

Education and Training

Prof. Dr. Jens Carl **STREIBIG**
Dept. Agriculture and Ecology (Crop Science)
Faculty of Life Sciences
The University of Copenhagen
Højebakkegaard Allé 13
Room 20
DK-2630 TAASTRUP

T + 45 35 33 34 57
F + 45 35 33 34 78
jcs@life.ku.dk

European Weed Mapping

Prof. Dr. Garifalia **ECONOMOU-ANTONAKA**
Faculty of Crop Production Science
Agricultural University of Athens
Iera Odos Str.
G-11855 ATHENS

economou@aua.gr

Germination and Early Growth

Dr. Kirsten **TØRRESEN**
Bioforsk Plantehelse
Høgskoleveien 7
N-1432 ÅS

T +47 97180114
kirsten.torresen@bioforsk.no

Herbicide Resistance

Dr. Paul **NEVE**
Rothamsted Research,
West Common, Hertfordshire
GB-AL5 2JQ HARPENDEN,

T +44 (0) 1582 763 133
paul.neve@rothamsted.ac.uk

Herbicide Tolerant Varieties

Dr. Ivo O. **BRANTS**
Monsanto Europe S.A.
Tervurenlaan 270-272
B-1150 BRUSSELS

T +32 2 776 7845
F + 32 2 776 7648
ivo.o.brants@monsanto.com

Invasive Plants

Mr Christian **BOHREN**
Research Station Agroscope Changins-Wädenswil (ACW)
P.O. Box 1012
CH-1260 NYON 1

T + 41 22 363 44 25
F + 41 22 363 43 94
christian.bohren@acw.admin.ch

Optimisation of Herbicide Dose

Hr. Per **KUDSK**
Dept of Integrated Pest Management
University of Aarhus
Forsøgsvej 1
DK-4200 SLAGELSE

T + 45 8999 1900
per.kudsk@agrsci.dk

[Back to Content](#)

EWRS Working Groups

(continued)

Parasitic Weeds	Dr. Maurizio VURRO Istituto di Scienze delle Produzioni Alimentari – CNR Via Amendola 122/O IT-70125 BARI	T + 39 080 5929331 F + 39 080 5929374 maurizio.vurro@ispa.cnr.it
Physical and Cultural Weed Control	Dr Marleen RIEMENS Wageningen University and Research Centre Plant Research International- Agrosystems Building no. 107 Droevendaalsesteeg 1 NL-6708 PB WAGENINGEN	T +31 317 480499 F +31 317 481047 marleen.riemens@wur.nl
Site-Specific Weed Management	Prof. Dr. Svend CHRISTENSEN University of Copenhagen Faculty of Life Sciences Højbakkegård Alle 30 DK-2630 TAASTRUP	T + 45 353 33561 M +45 3058 9614 svc@life.ku.dk
Weed Management Systems in Vegetables	Dr. Euro PANNACCI Dept. of Agricultural and Environmental Sciences University of Perugia, Borgo XX Giugno 74 IT-06121 PERUGIA	T + 39 075 585 6342 F + 39 075 585 6344 euro.pannacci@unipg.it
Weeds and Biodiversity	Prof. Dr. Bärbel GEROWITT Insitute for Land Use University of Rostock Satower Str, 48 DE-18051 ROSTOCK	T + 49 381 498 2200 F + 49 381 498 2199 baerbel.gerowitt@uni-rostock.de
Weed Management in Arid and Semi-Arid Climate	Dr. Hanan EIZENBERG Department of Weed Research Newe Ya'ar Research Center P.O. Box 1021, Ramat Yishay I-30095 RAMAT YISHAY	T +972 4 9539535 M +972 50 622-0035 F +972 4 9539571 eizenber@volcani.agri.gov.il Skype hananeizenberg

[Back to Content](#)

INSTRUCTIONS FOR CONTRIBUTORS

Deadline for contributions to be published in the following Newsletter issue: 1 January 2015

Questions

If you have any problems in writing or formatting your article, please do not hesitate to contact me, I'll be happy to assist you, As Technical Editor of the Newsletter, I prepare the final layout of the Newsletter prior to publishing, You can contact me by sending an E-mail to newsletter@ewrs.org / moonen@sssup.it or by calling me at +39 050 883567, I'm looking forward to receiving your contributions.

CHARGES FOR JOB ADVERTISING IN THE NEWSLETTER

- Job advertisements are free of charge for EWRS members from public research and education institutions.
- The rate for a job advertisement from private enterprises is € 100 page, Reductions can be negotiated with the Newsletter editor for half page adverts.

Publication of a job advertisement on a special page of the EWRS website <http://www.ewrs.org> will be charged € 300 per advert.

NATIONAL REPRESENTATIVES 2012-2015

BELGIUM
F. Henriët
henriet@cra.wallonie.be

BULGARIA
G. Baeva
gankabaeva@abv.bg

CROATIA
E. Stefanic
Edita.Stefanic@pfos.hr

CZECH REPUBLIC
J. Soukup
soukup@af.czu.cz

DENMARK
P. Kudsk
per.kudsk@agrsci.dk

FINLAND
J. Salonen
jukka.salonen@mtt.fi

FRANCE
H. Darmency
darmency@dijon.inra.fr

GERMANY
B. Albrecht
albrecht@wzw.tum.de

GREECE
I.G. Eleftherohorinos
eleftero@agro.auth.gr

HUNGARY
G. Kazinczy
kazinczi.gabriella@ke.hu

ISRAEL
T. Yaacoby
yaacoby@agri.huji.ac.il

ITALY
F. Vidotto
francesco.vidotto@unito.it

LITHUANIA
V. Pilipavicius
Vytautas.Pilipavicius@lzuu.lt

NETHERLANDS
M. Riemens
marleen.riemens@wur.nl

NORWAY
J. Netland
jan.netland@planteforsk.no

POLAND
Z. Woznica
woznica@up.poznan.pl

ROMANIA
M. Berca
MihaiB@agrovet.ro

SERBIA
M. Meseldzija
maja@polj.uns.ac.rs

SPAIN
J. Recasens
jrecasens@hbj.udl.cat

SWEDEN
L. Andersson
lars.andersson@evp.slu.se

SWITZERLAND
W. Rueegg
willy_t.rueegg@syngenta.com

TURKEY
H. Mennan
hmennan@omu.edu.tr

UNITED KINGDOM
J. Storkey
jonathan.storkey@rothamsted.ac.uk

Article XIV NATIONAL REPRESENTATIVES

European countries with at least a certain number of Members eligible to vote, shall be entitled to have its own National Representative. The decisive number shall be determined by the General Assembly on proposal of the Board, and described in a Bye-Law.

1. Functions

The functions of the National Representatives are:

To promote, co-ordinate and advise on the activities of the Society and to act as contacts between the Members in their countries and the Society.

To be eligible for co-option as Additional Member on the Board.

To keep in touch with the Board through the Secretariat, to report about any activities.

To recruit new members interested to work and interact with the Society.

To involve actively the national Members in the activities of the Society.

To correspond new research ideas and trends.

To propose candidates for auditors of the Main Account.

To ensure that the editor of the Newsletter is informed of all meetings in their countries and to prepare reports, if appropriate, about such meetings to be published in the Newsletter.

2. Meetings

A meeting of the National Representatives shall be organized at the occasion of each Symposium to discuss current trends in the research area of the Society. Requests for additional meetings within the period between two Symposia must be approved by the Board. The Immediate Past-President of the Society shall be the Chairperson of the meetings.

The nomination of candidates and the election of a National Representative by the Members of his / her country shall be conducted by the Secretary every 4 years on occasion of the election of the Vice-President. The Representatives shall be eligible for re-election for 1 further term.